

EVENTS & ACTIVITIES

14 AUGUST + 15 AUGUST

Roman Quest Family Activities run in conjunction with London Mithraeum Bloomberg SPACE and London Museum. Free.

5 SEPTEMBER + 6 SEPTEMBER

Mudlarker exhibition and talks. Free.

See website for more details on all events.

With thanks to the City of London Cultural and Creative Learning Fund, Animate Arts and the participating schools.



scan the QR code to find out more

@onacityldn f@onacitylondon onacitylondon.com

RE-IMAGINING LONDINIUM

Hidden below the streets of the modern City of London are the remains of an earlier settlement. Founded almost 2000 years ago by the Romans,



Londinium quickly grew into the largest, most important city in the province.

Re-imagining Londinium takes a new look at the most important city in

Roman Britain. Working with an archaeologist and an artist, primary school children from London have created eight new artworks inspired by the ancient city and trade.

Follow this trail to discover these artworks, each inspired by a different aspect of trade. Along the way there are things to spot, archaeology to discover and green spaces in which to take a break.

ROMAN BRITAIN

On the trail, can you spot...?

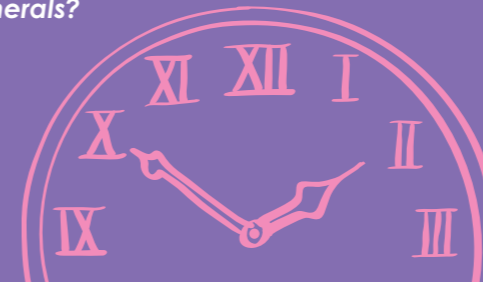
- The Romans may have left Britain a long time ago – but many of the buildings in the City of London today were inspired by the past.

Can you spot any buildings that look Roman?

- Roman cities were decorated with lots of statues.
- Can you spot a statue of a Roman god or goddess?**

- The Romans had different numbers to us. They used Roman numerals.

Can you spot any Roman numerals?



RE-IMAGINING LONDINIUM

A young person's view of the Roman city

Follow the trail to discover eight new artworks inspired by Roman London 7 July – 31 August.



1. ADVERTISING

City Information Centre

Kingsmead Primary School, Ness Class

Advertising is nothing new. Roman streets were covered by advertisements painted onto walls, but these rarely survive.

At the well preserved site of Pompeii however, archaeologists have found more than 80 advertisements for the games at the Amphitheatre.

2. MILITARY EQUIPMENT

Noble Street

Mandeville Primary School, Mercury Class

Visible in the gardens below is part of the Roman City Wall. Stretching for nearly three kilometres, these impressive walls once protected the people of Londinium.

Only the lowest part of the wall you can see is Roman. Rebuilt and repaired over the years, today this is a very complicated piece of archaeology!

3. THE GAMES

London's Roman Amphitheatre

Prior Weston Primary School, Parliament Class

Every important Roman city needed an amphitheatre. Discovered by archaeologists in 1988, the remains of London's oldest sporting venue are preserved in the basement of the Guildhall Art Gallery.

A visit to the games lasted all day. Gladiators fought wild animals in the morning and other gladiators in the afternoon.

Artwork only visible during Guildhall Art Gallery opening times.

4. TRAVEL

Cheapside

Kingsgate Primary School, Oak Class

Londinium was a well-connected city. People and goods from around the Roman world arrived by ship on the River Thames. Well-built roads criss-crossed the city and Londinium was at the centre of a network of roads covering the province.

One of the most important, running through the city from east to west, ran very close to where you are standing now.

5. MONEY

Mansion House

Kingsgate Primary School, Rosewood Class

The Romans used metal coins to shop, pay taxes and for trade. They were stamped from gold, silver and bronze and on one side featured the face of the emperor or empress.

Coins are useful for archaeologists in helping to date things. Can you believe that archaeologists excavating London's Roman Amphitheatre found more than a thousand Roman coins.

6. FOOD AND DRINK

Leadenhall Market

Kingsgate Primary School, Plum Class

Beneath this impressive Victorian market, archaeologists found the remains of a Roman market, or Forum as it was called. Here you could buy fruit and vegetables grown locally, together with foods imported from around the Roman world and beyond.

7. BATHING

Billingsgate Roman House and Baths

Harry Gosling Primary School, Purple class

The Romans loved to relax at the Baths. Can you believe archaeologists working in London have discovered the remains of 11 bathhouses so far?

Billingsgate Roman Baths was one of the smallest. With three main rooms, these private baths were probably used exclusively by the rich family who lived in this house.

Access to Billingsgate Roman House and Baths is by guided tour only (see website for details).

8. FLORA

St Dunstan in the East Church Garden

Harry Gosling Primary School, Lilac Class

Archaeologists have found many different types of house in Londinium. Most were built of wood with two or three rooms and perhaps a small outside space for growing flowers, vegetables and medicinal herbs.

LONDINIUM TIMELINE

43 CE
Romans successfully conquered Britain, led by the emperor Claudius.

47-50 CE
Londinium founded.

60-1 CE
Boudicca led a rebellion against Roman forces. Londinium destroyed.

410 CE
Traditional date for the end of Roman Britain.

1 City Information Centre
(Theme: **ADVERTISING**)
St. Paul's Churchyard,
London EC4M 8BX

2 Noble Street
(Theme: **MILITARY EQUIPMENT**)
Noble St,
London EC1A 4HJ

3 Guildhall Art Gallery & London's Roman Amphitheatre
(Theme: **THE GAMES**)
Guildhall Yard,
London EC2V 5AE

4 Cheapside
(Theme: **TRAVEL**)
St Mary Le Bow Church,
Cheapside, London
EC2V 6AU

5 Mansion House
(Theme: **MONEY**)
London EC4N 8BH

6 Leadenhall Market
(Theme: **FOOD AND DRINK**)
Gracechurch St,
London EC3V 1LT

7 Billingsgate Roman House & Baths
(Theme: **BATHING**)
101 Lower Thames St,
London EC3R 6DL

8 St Dunstan in the East Church Garden
(Theme: **FLORA**)
St Dunstan's Hill,
London EC3R 5DD

1 St Paul's

4 Mansion House

5 BONUS STOP!
LONDON MITHRAEUM
BLOOMBERG SPACE

6 Lloyd's Building

7 Billingsgate Roman House & Baths

8 St Dunstan in the East Church Garden

